



# SUSTAINABLE HEALTHCARE IN ITALY: STRATEGIES, BARRIERS AND OUTCOMES

Marta Pinzone, Emanuele Lettieri, Cristina Masella

Politecnico di Milano, Department of Management, Economics and Industrial Engineering, via lambruschini 4/b, 20100 Milano  
Corresponding author: [marta.pinzone@polimi.it](mailto:marta.pinzone@polimi.it)

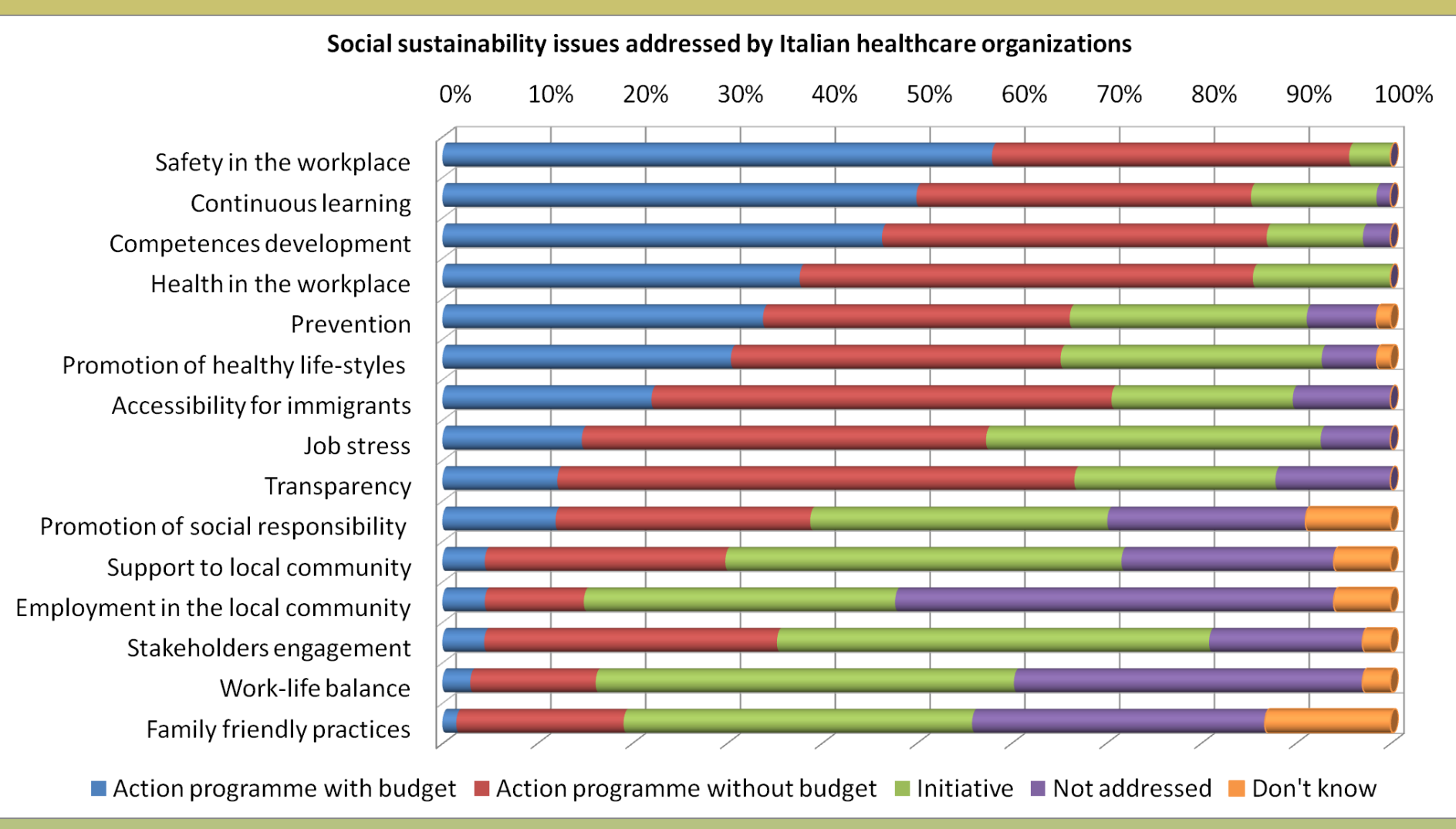
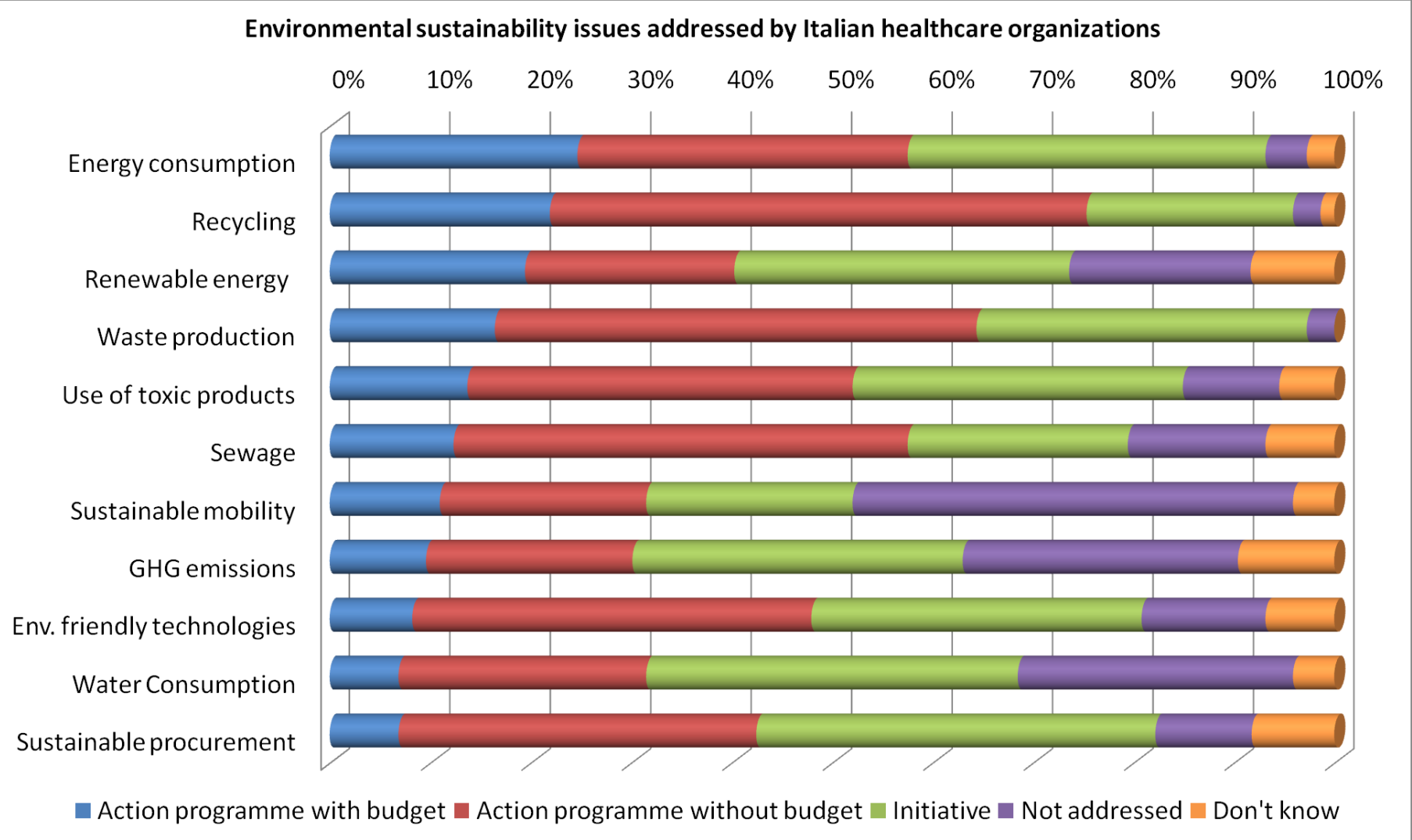
## Methodology

The questionnaire was designed on the base of **previous literature** and sent to **432 Italian healthcare organizations**.  
The **Medical Director** is the **key organizational informant** to which the questionnaire was addressed.  
The final **response rate** was equal to **13.4%**

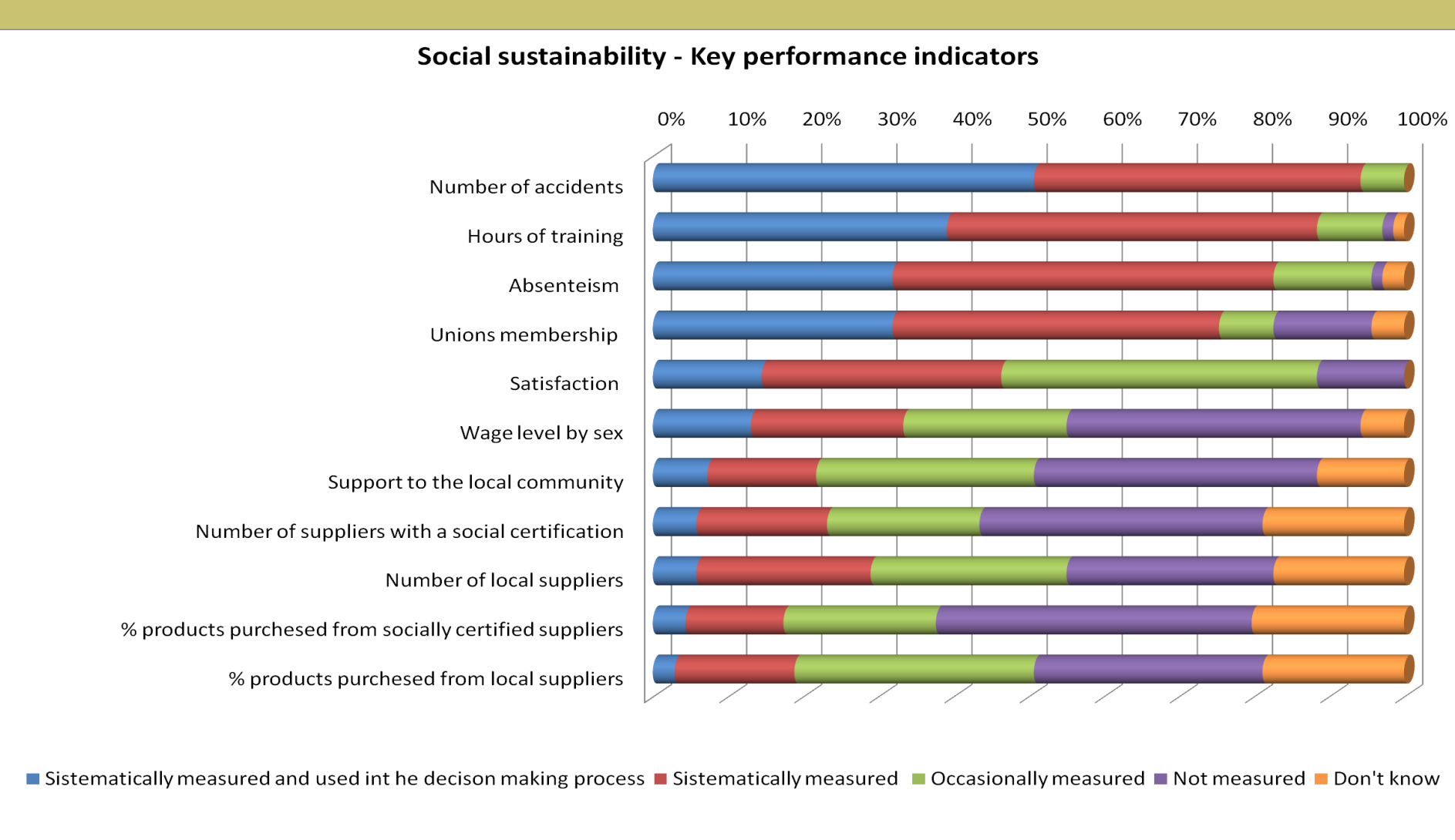
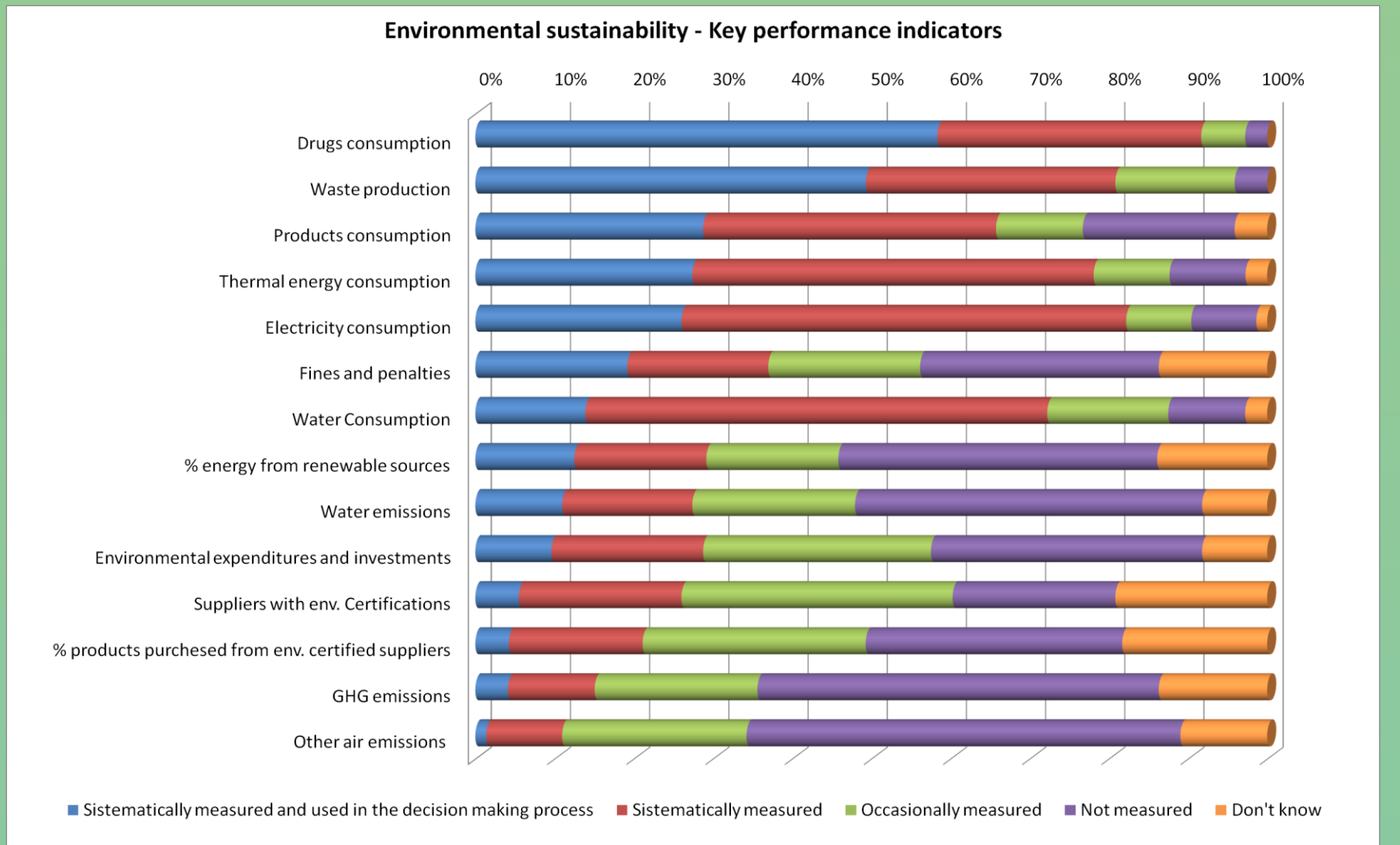
### Environmental sustainability

### Social sustainability

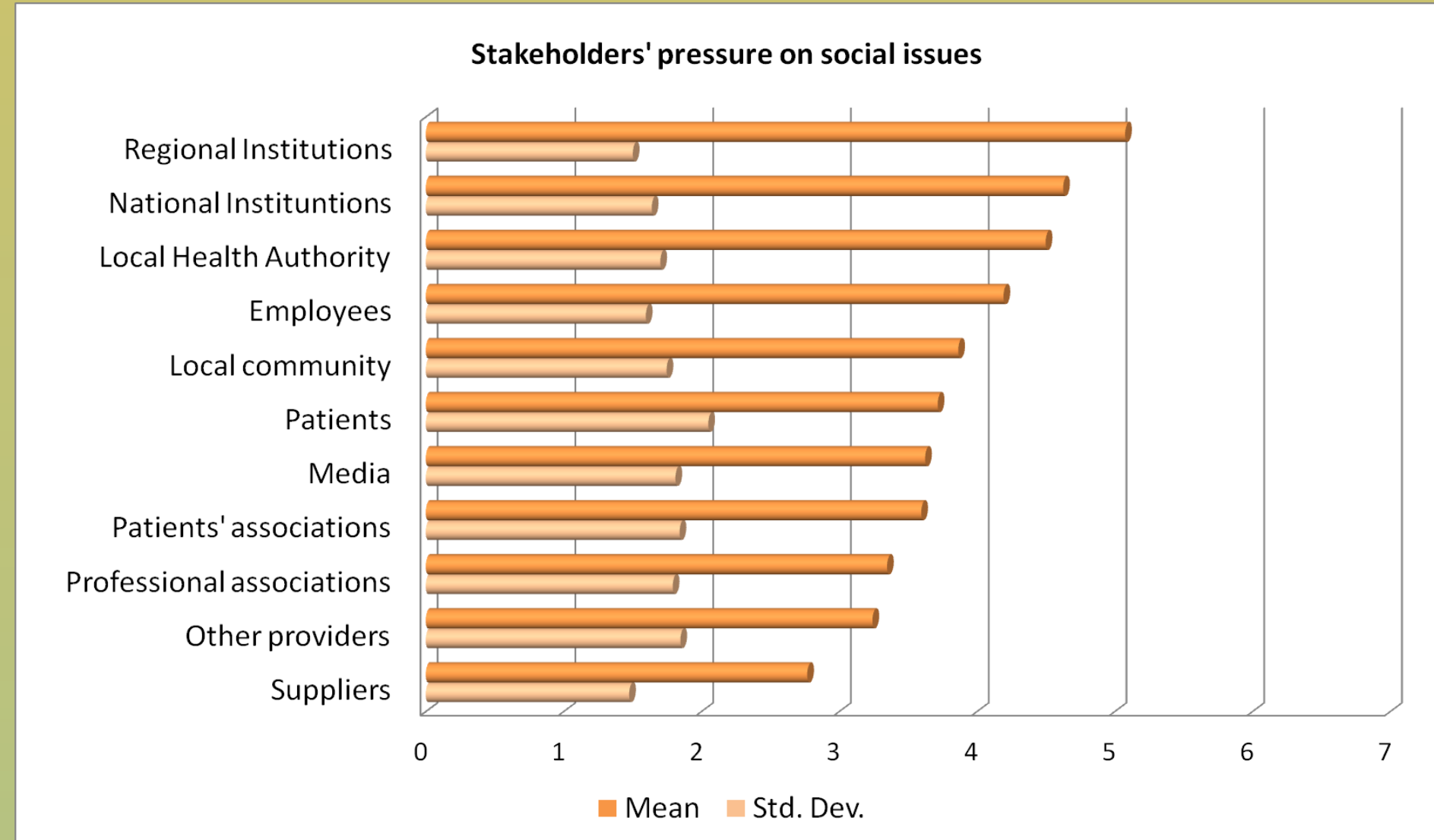
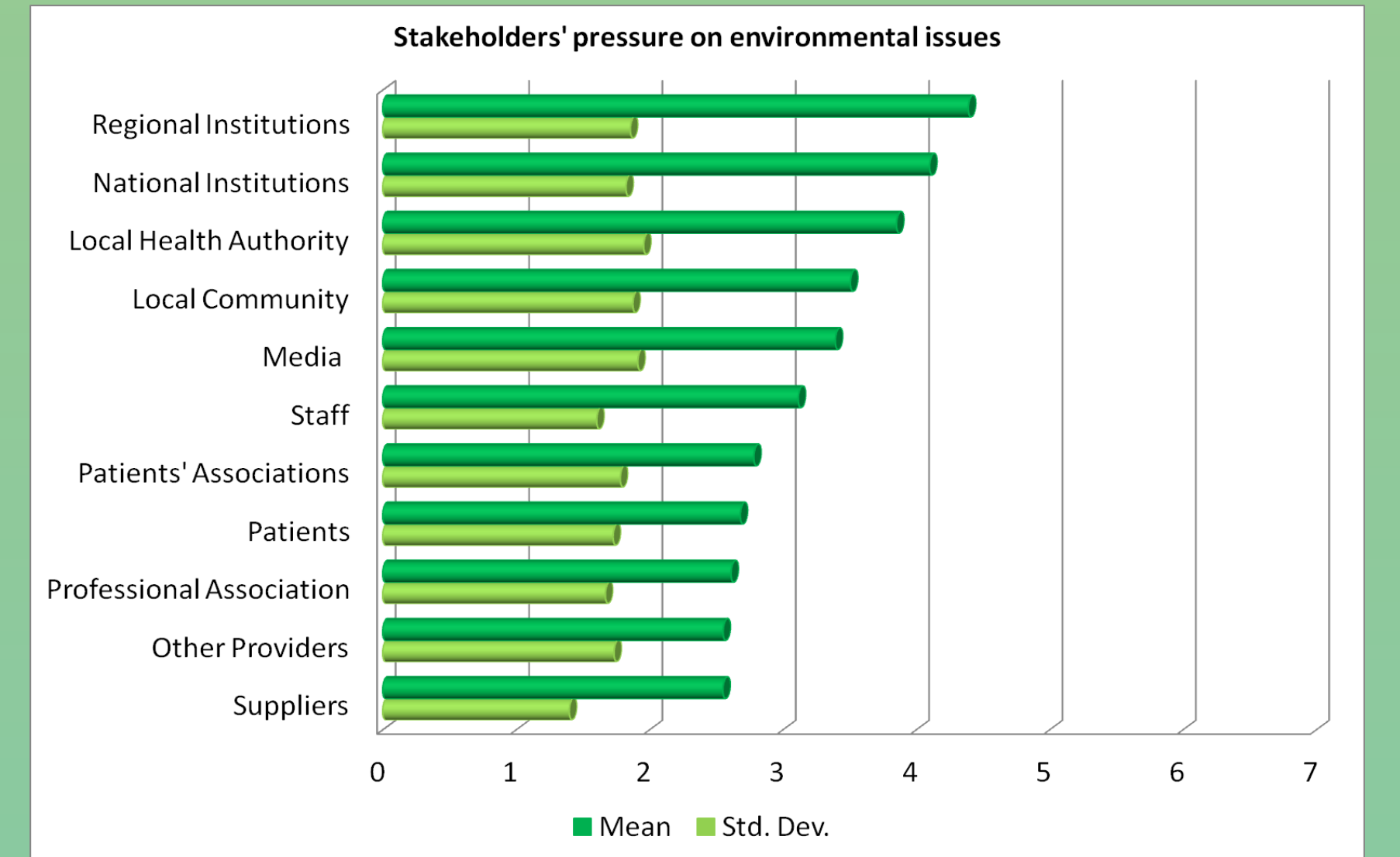
What do they do?



What do they measure?



Which stakeholders do they respond to?



Which barriers do they deal with?

