



Environmentally Sustainable Health Systems

Dr Bettina Menne and Dr Katrina Lyne
WHO European Centre for
Environment and Health



**World Health
Organization**

REGIONAL OFFICE FOR

Europe



**Organisation
mondiale de la Santé**

BUREAU RÉGIONAL DE L'

Europe



Weltgesundheitsorganisation

REGIONALBÜRO FÜR

Europa



**Всемирная организация
здравоохранения**

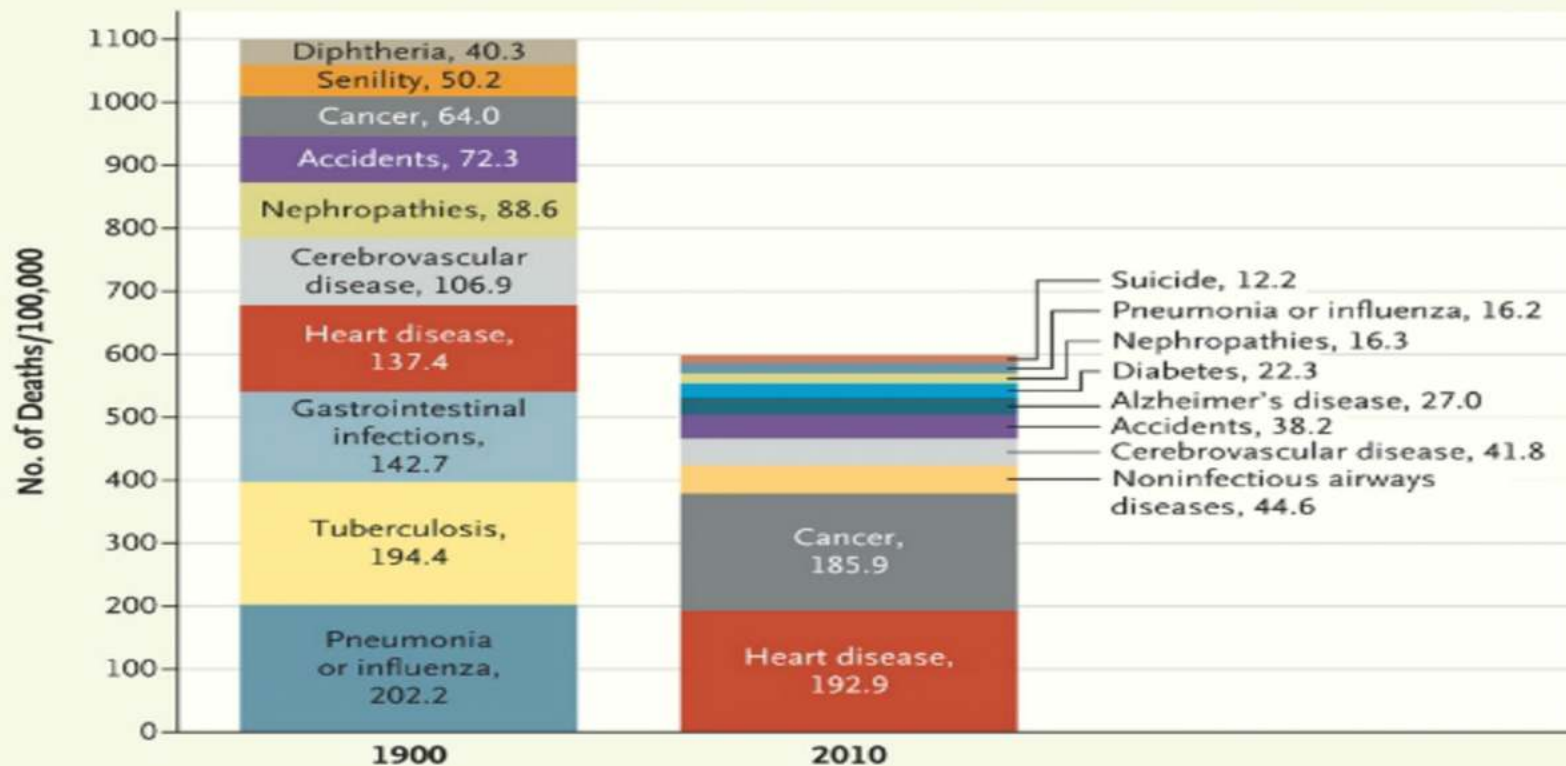
Европейское региональное бюро

The WHO European Region in the 21st century



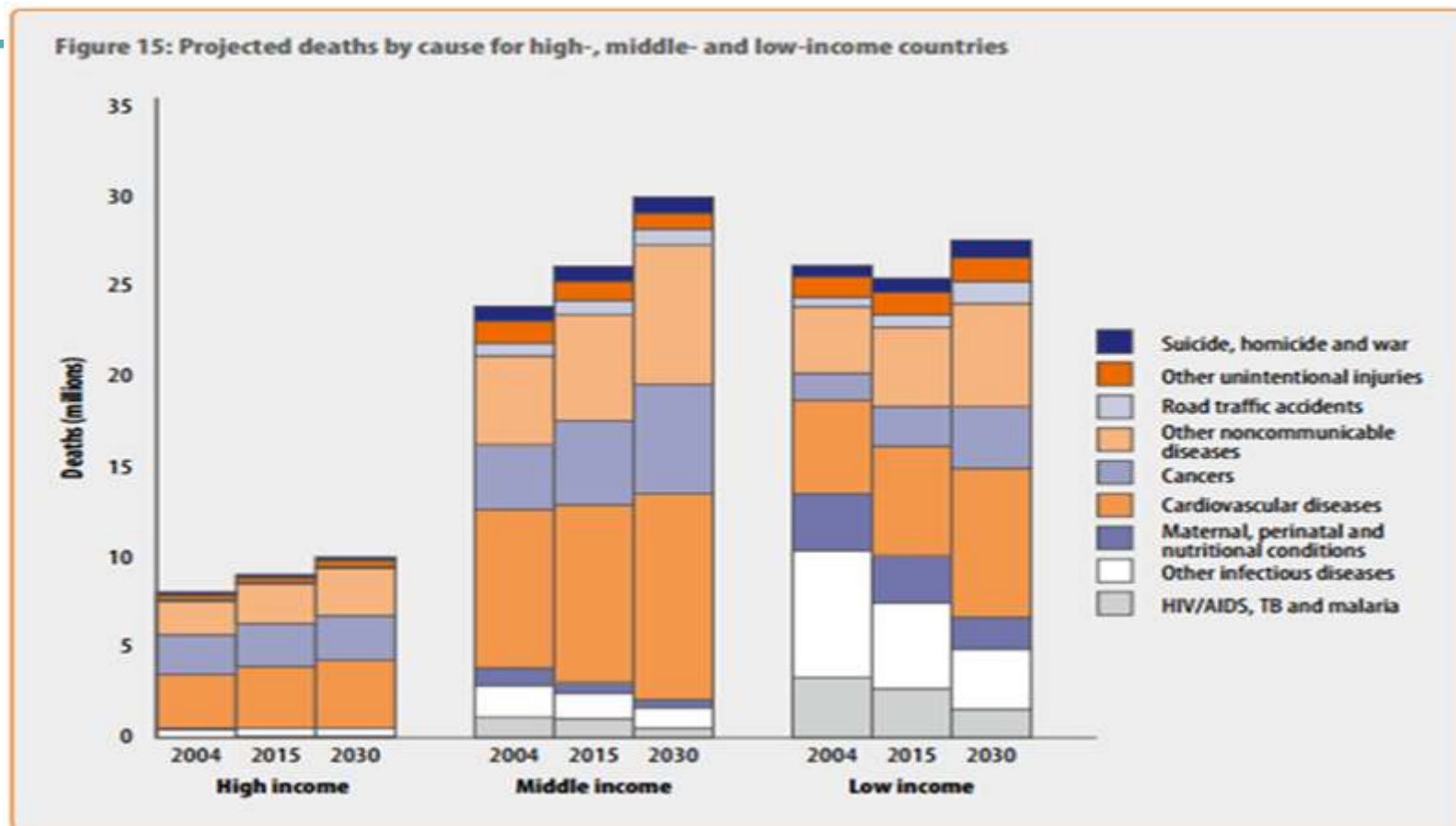
- More than 894 old; 70% live in cities
- 22% GDP growth fall of 28% in carbon emissions between 1990 and 2008
 - 1/5 of burden of disease is caused by environmental pollution
- More than 86% of deaths are from non communicable diseases;
 - Growing levels of obesity and infectious disease outbreaks
 - Rising levels of inequalities
- Increasing financial pressures on health and welfare systems
 - Important social and technological transformations
 - Geopolitical shifts

Mortality in the 1900s – Global Pattern



Source: Jones, D et al. The Burden of Disease and the Changing Task of Medicine. N Engl J Med 266:25, 2012

Projected Cause of Death - Income



Source: WHO Global Burden of Disease 2004.

Additional challenges



- **Climate Change**
- **Food and Water**
- **Urbanisation**
- **Migration**



- **Ageing + NCD**
- **Disaster**
- **ICT**
- **Economic costs**





Radical
transformation

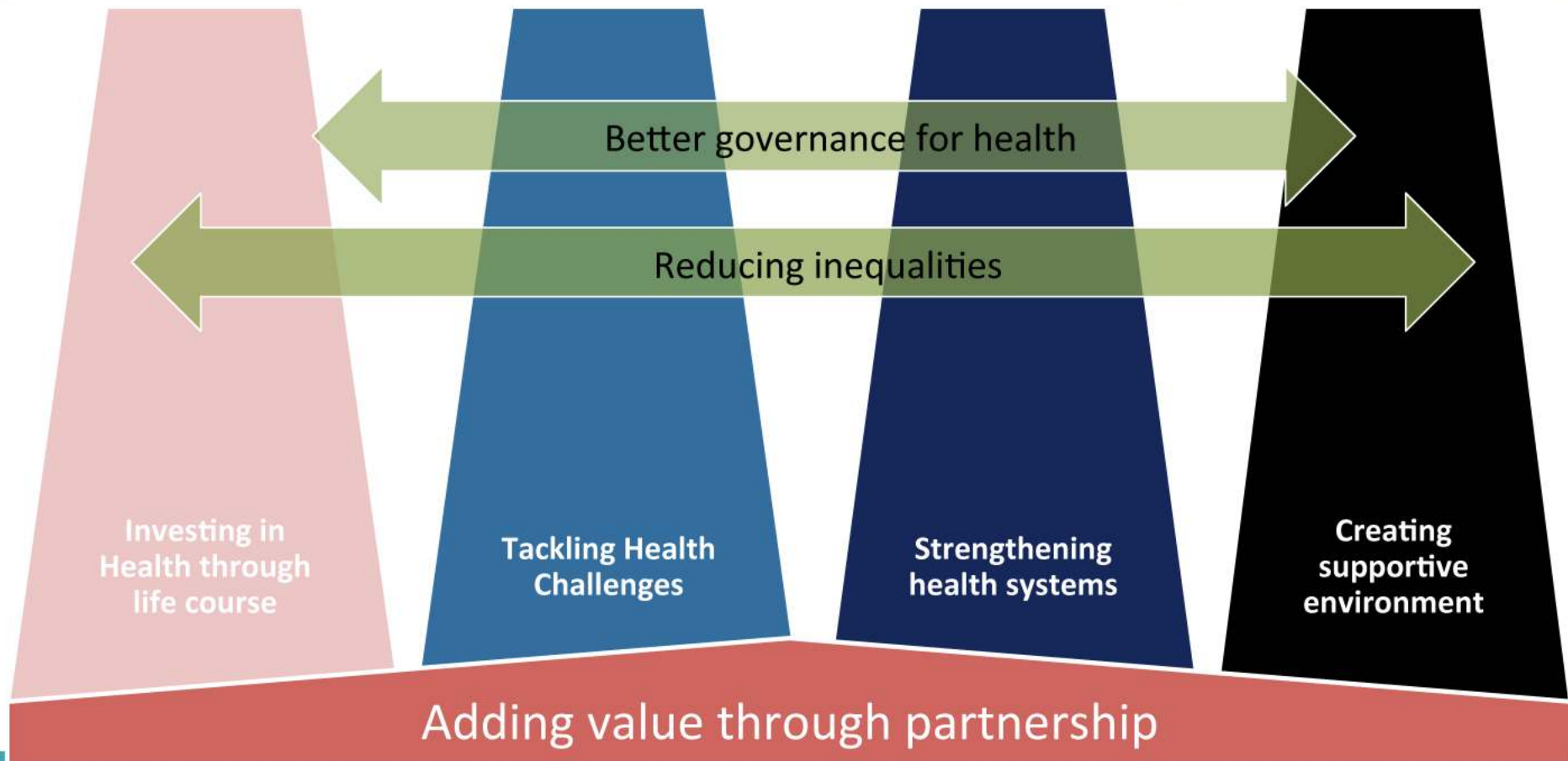
Questions

- ***What are environmentally sustainable health systems?***
- ***What are the vision, objectives and sustainable outcomes?***
- ***How can the actions be implemented?***
- ***What are appropriate indicators for monitoring the process and outcomes?***

what is healthcare's role in the wider determinants of health?

Health 2020

people enabled and supported in achieving their full health potential and well-being

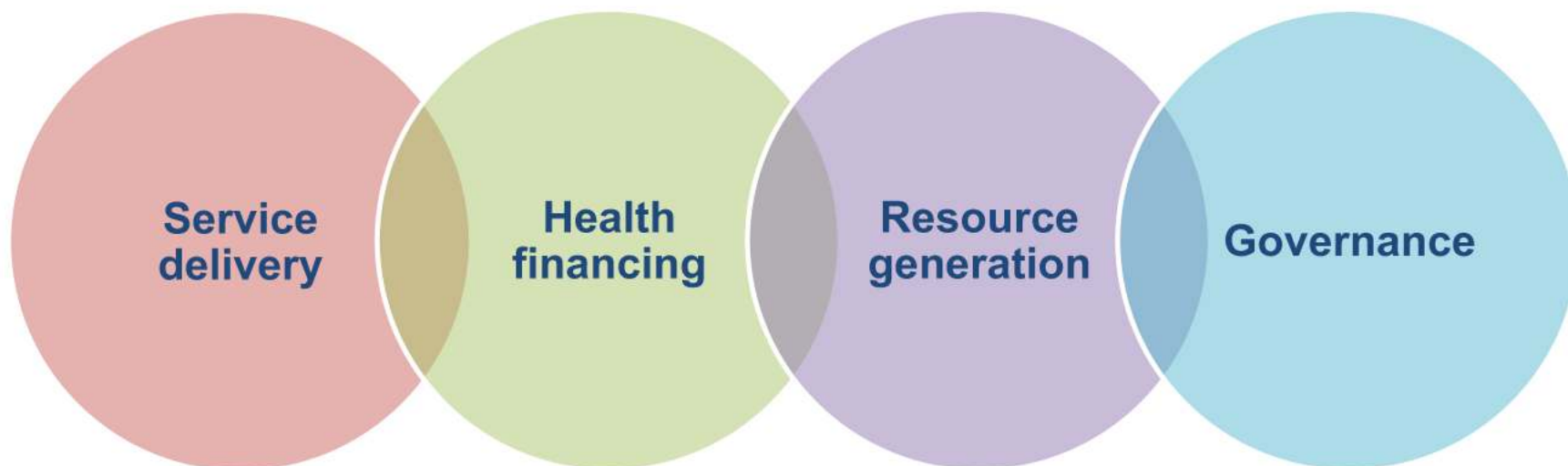
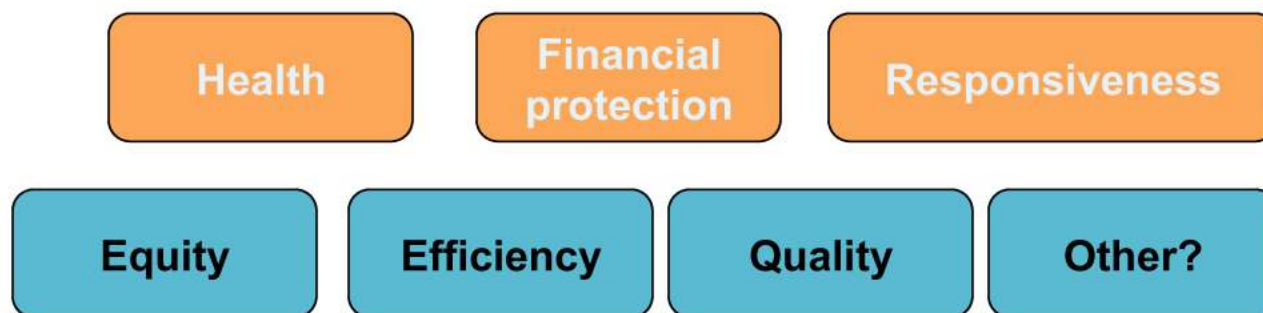


Health systems

- *“A health system consists of all organizations, people and actions whose primary intent is to promote, restore or maintain health. This includes efforts to influence determinants of health as well as more direct health-improving activities. A health system is therefore more than the pyramid of publicly owned facilities that deliver personal health services.” (WHO, 2007)*



Health system functions

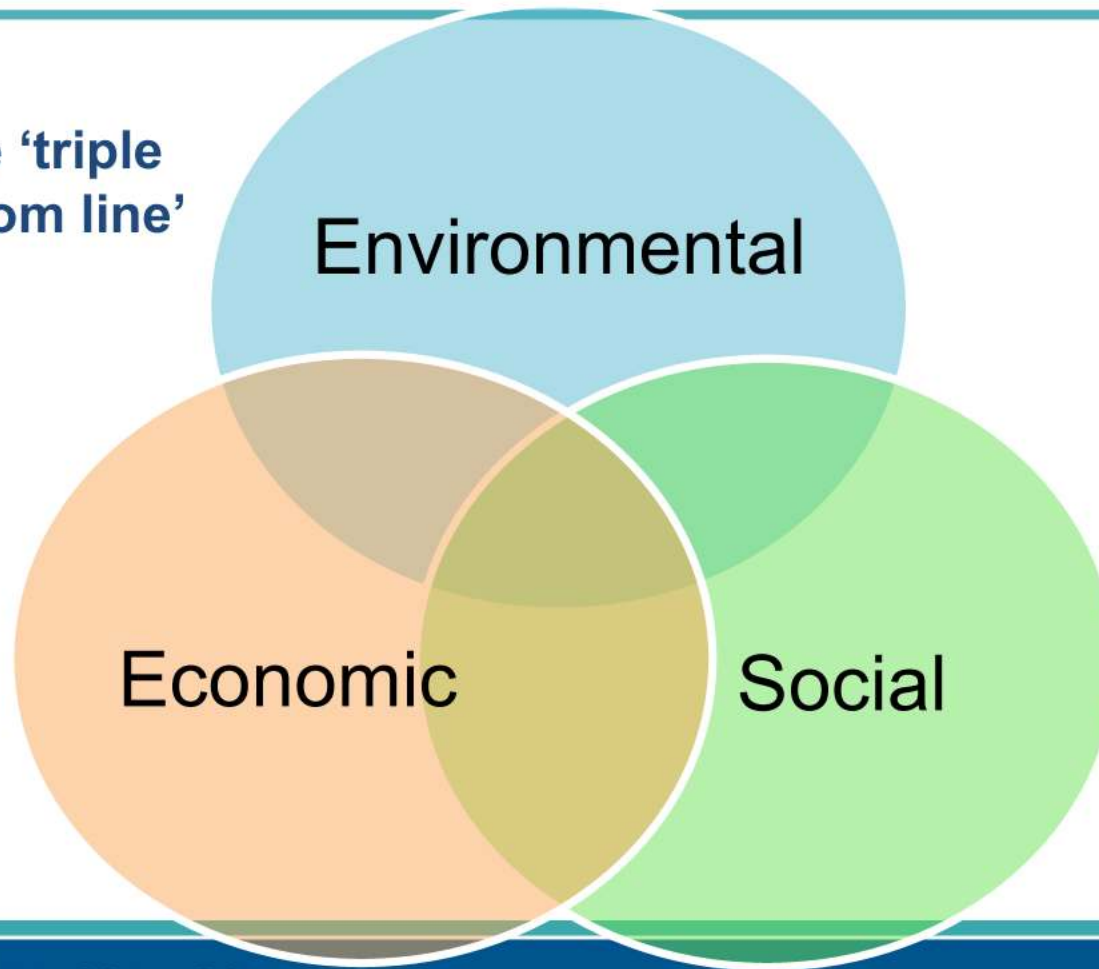


Since 1989 the WHO Regional Office for Europe is taking action



The broader determinants of health

The 'triple
bottom line'



Outputs

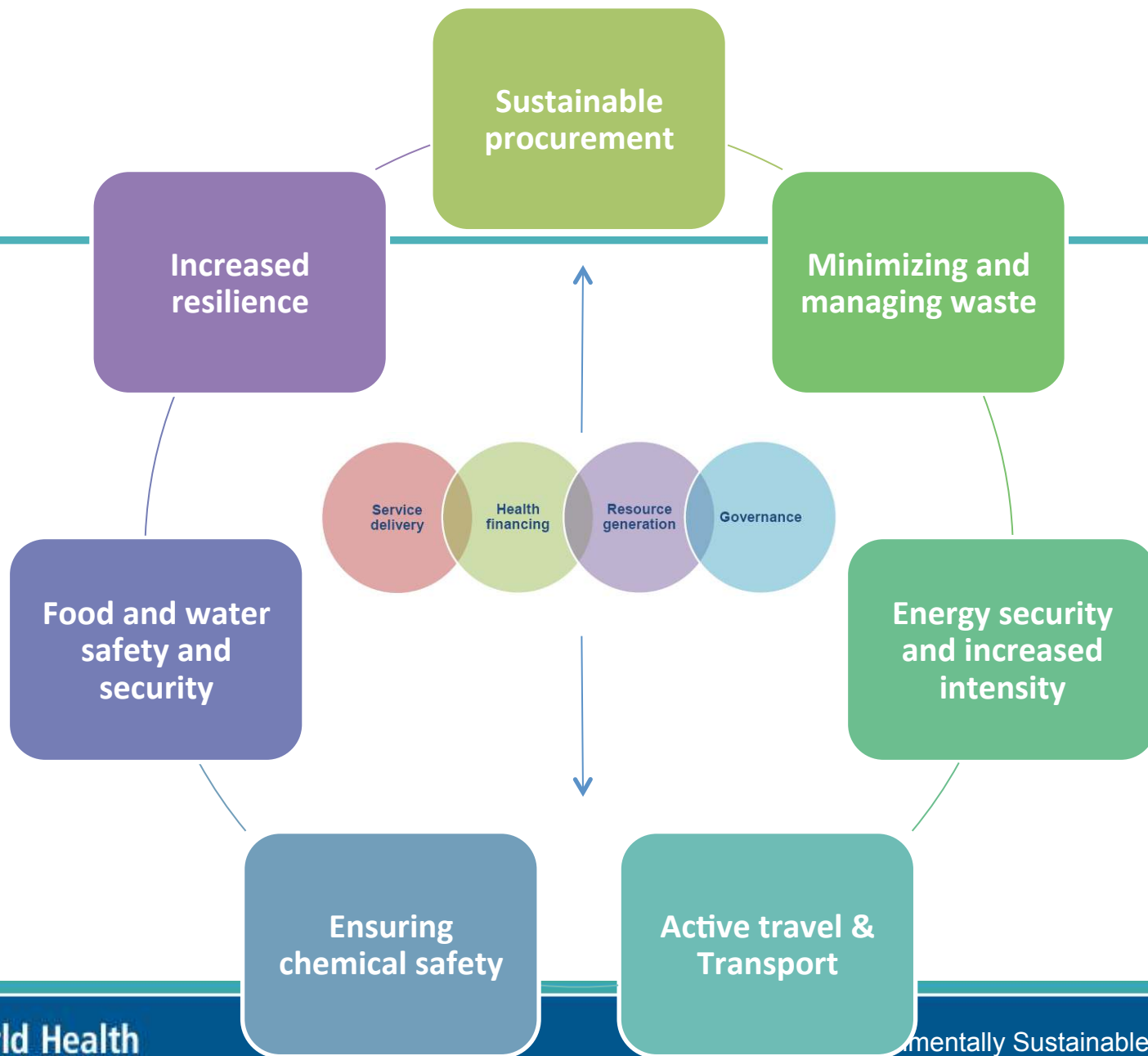
- Quality care
- Immediate health benefits
- Social and community benefits
- Balanced approach
- Inevitable growth
- Universal health coverage
- Co-benefits: Reduce environmental burden of disease
- Innovative



Markers of success

- ✓ 'everybody's business'
- ✓ A true indicator of quality
- ✓ a life cycle approach
- ✓ Supported by evidence
- ✓ A Genuine collaborative effort
- ✓ Implementation is standard
- ✓ Flow-on effects



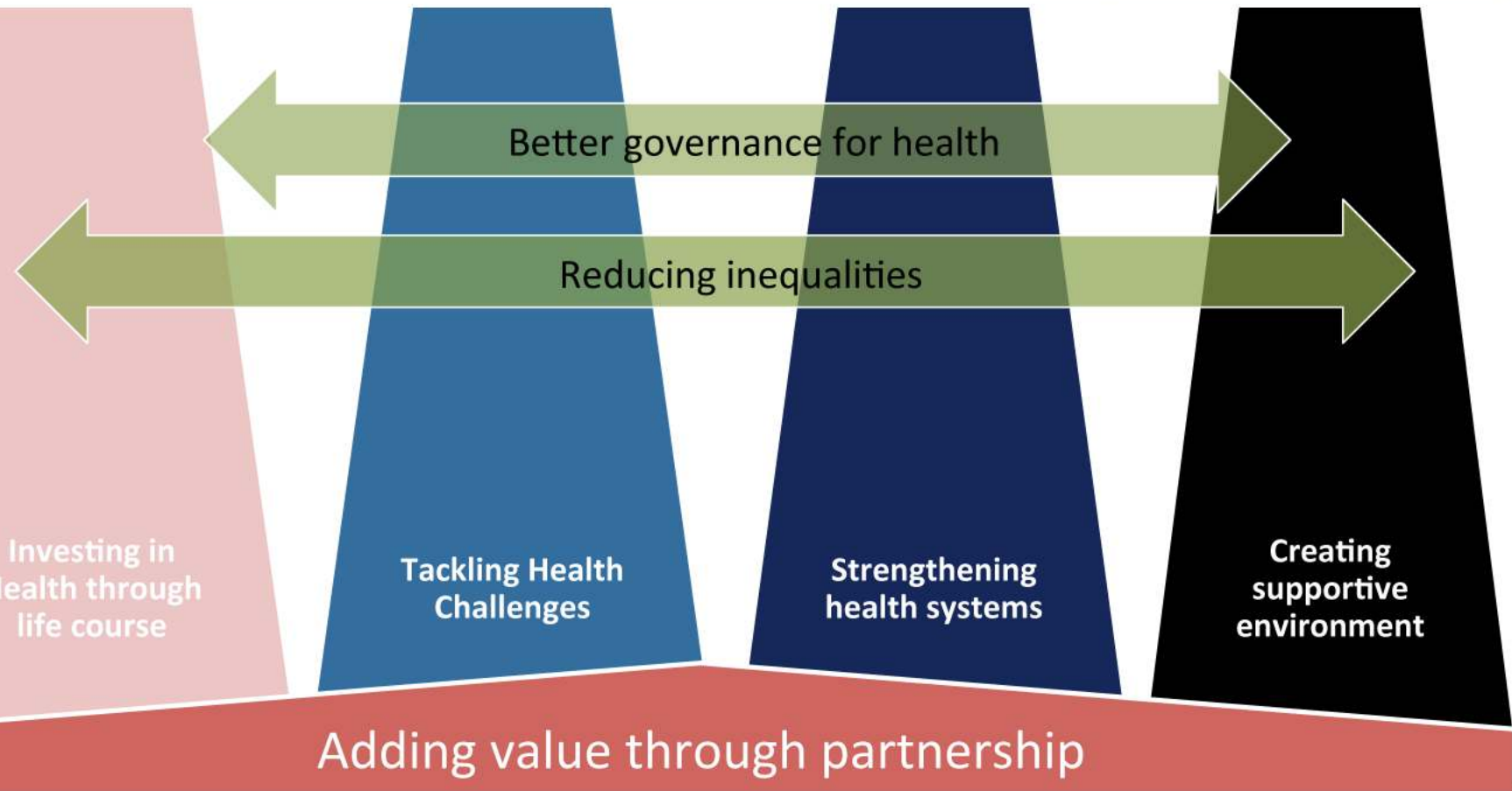


How should actions be implemented?

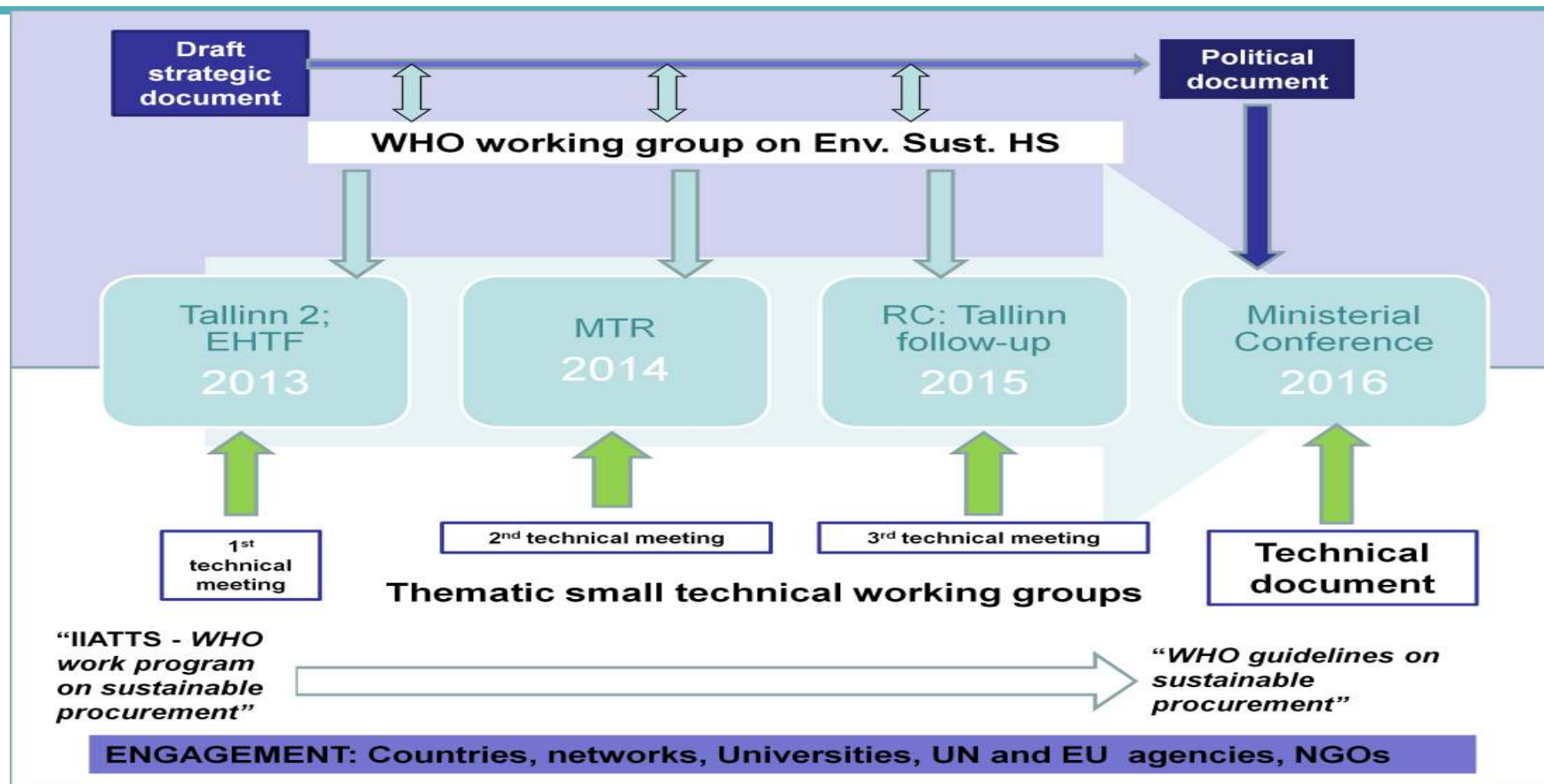


Health 2020

peoples enabled and supported in achieving their full health potential and well-being



Products of this process



- Bettina Menne
 - menneb@who.int
 - www.euro.who.int/

Health 2020

- Aims for the highest attainable standard of health
- Supports human right to health, solidarity, fairness and sustainability
- Supports link between better health, the economy and environmental sustainability
- Sustainability requires political, legal, and economic commitments

HEALTH 2020

A European policy framework
supporting action across government
and society for health
and well-being



Challenges

Environmental Determinants

CLIMATE
CHANGE

NATURAL DISASTERS

Heat-waves

Fires

Drought

Floods

Mudslides

FOOD SECURITY

VECTOR-BORNE
DISEASE

Social & Economic Determinants

AGEING

ECONOMICS

INEQUALITIES

URBANISATION

MIGRATION

TECHNOLOGY

Health Outcomes

NCDs

LONGER
LIFE
EXPECTANCIES

Health Systems

INCREASED
DEMANDS

DECREASED
WORKFORCE