

# Commissioning green space for health



- Nick Grayson
- Climate Change & Sustainability Manager
- Birmingham City Council
- CleanMed Europe Conference
- September 19<sup>th</sup> 2013
- “Metanoia”

# Commissioning green space for health



**NATURAL  
CAPITAL**

NASA

CLEADMED EUROPE SEPTEMBER 19TH 2013



# Commissioning green space for health

**"We the mayors and governors of the world's leading cities - ask you to recognise that the future of our globe will be won or lost in the cities of the world."**

Copenhagen Climate  
Change communiqué,  
December 2009



- Masdar
- Biomimicry 3.8
- CH2MHill

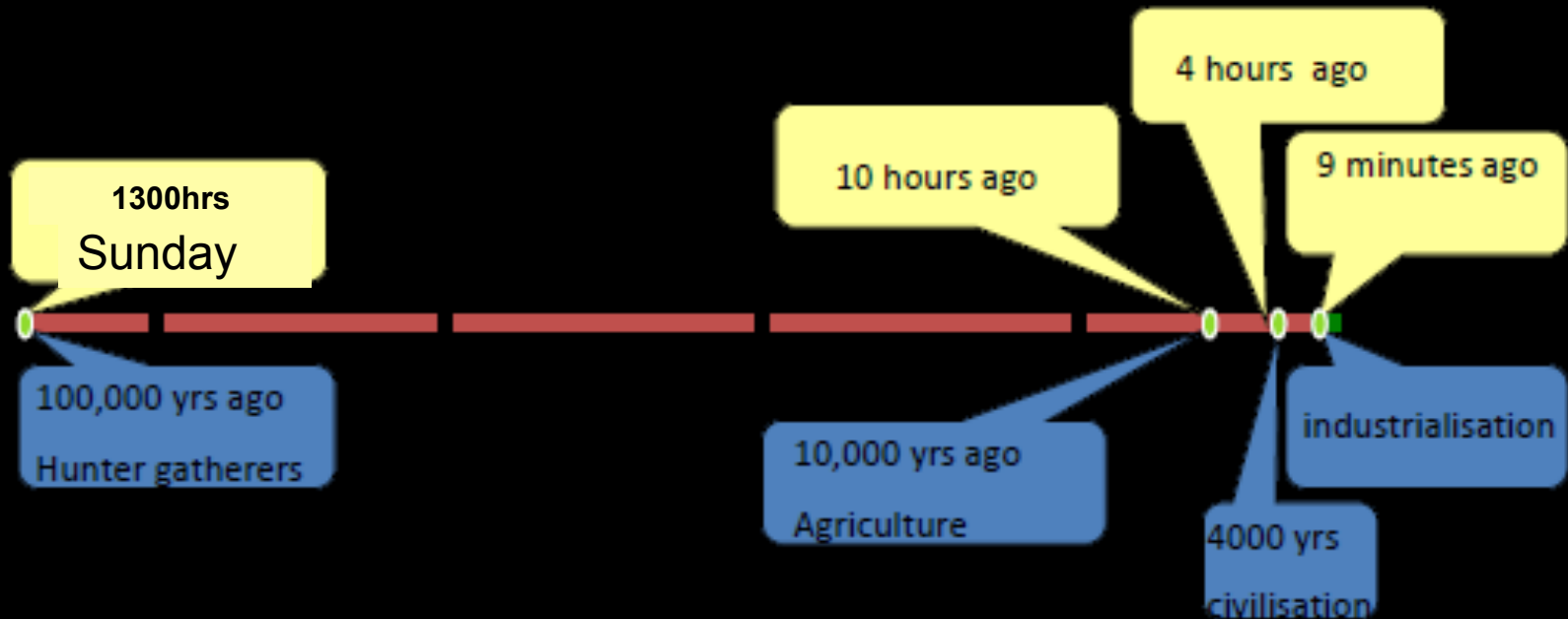


## UK Statistics 2012

- % UK classified as urban?
- % of UK population living as urban ?
- % urban areas not built form?
- % total of England built on?
- % GHG & Natural Resources global cities?

# Commissioning green space for health

If we take an hour to equal 1000 years then from Sunday to now is 100,000 years; the time from the origin of mankind to today.



# Commissioning green space for health

## THE LANCET

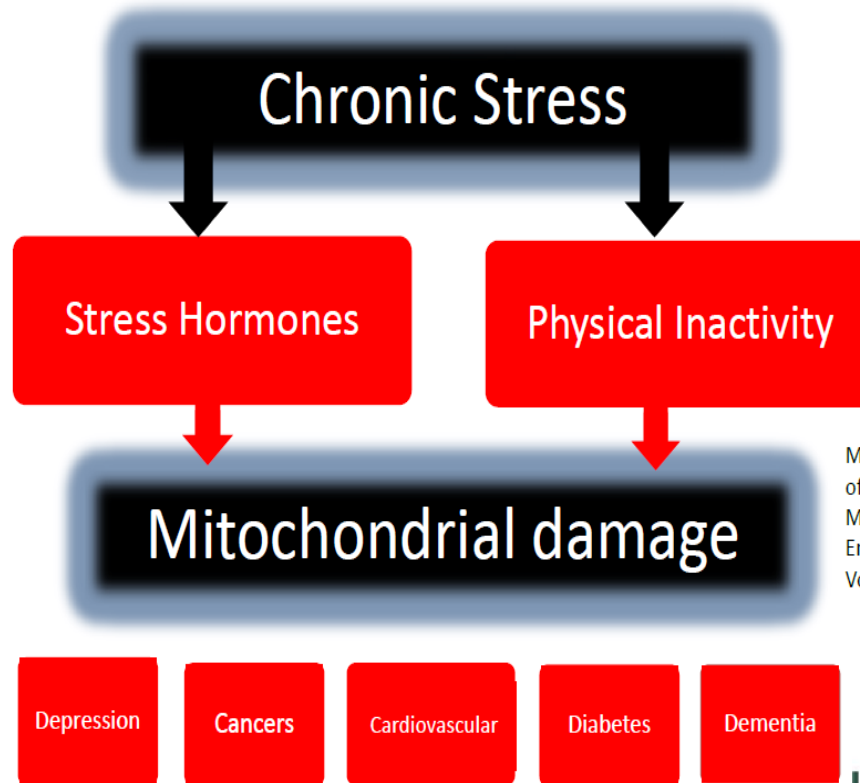
Physical Activity - July, 2012

www.thelancet.com



"In view of the prevalence, global reach, and health effect of physical inactivity, the issue should be appropriately described as pandemic, with far-reaching health, economic, environmental, and social consequences."

July 2012 – Physical Activity



Mitochondria as a key component of the stress response.  
Manoli et al. Trends in Endocrinology and Metabolism Vol 18 No 5 2007

Intelligent Health 

PEOPLE PURPOSE PLACE

MENE SURVEY RESULTS

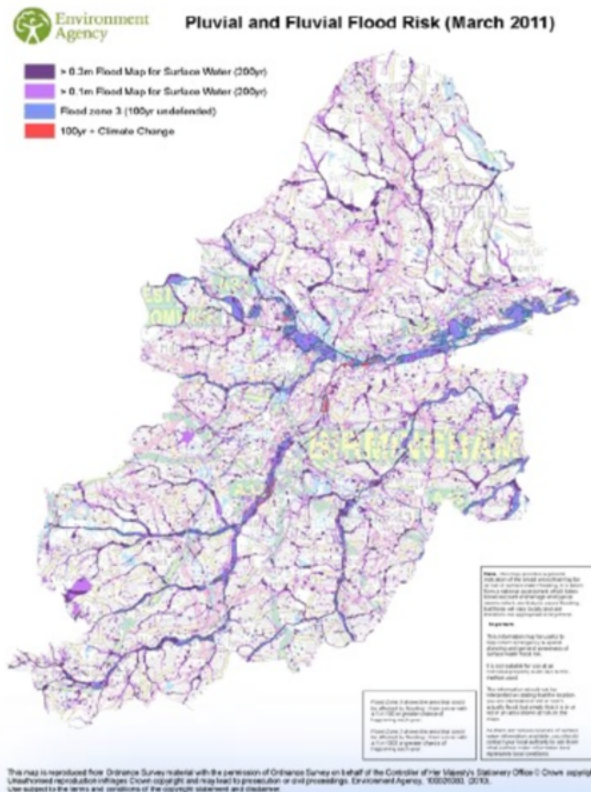
CLEADMED EUROPE SEPTEMBER 19TH 2013



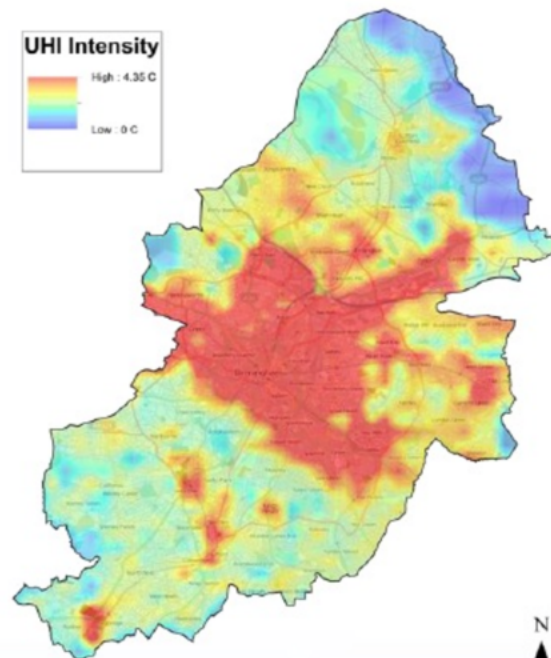
# BUCCANEER — Birmingham Urban Climate Change Adaptation Neighborhood Estimates of Environmental Risk

## Assessing the risks to Birmingham

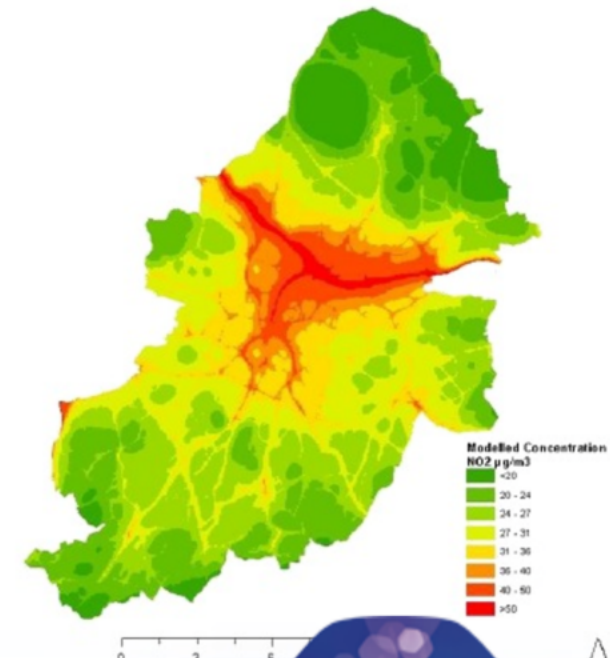
Modelled Annual Mean Nitrogen Dioxide Concentrations 2008



**Birmingham's Estimated  
Heatwave Urban Heat Island  
(18th July 2006, 01:00)**



© OpenStreetMap contributors, CC-BY-SA



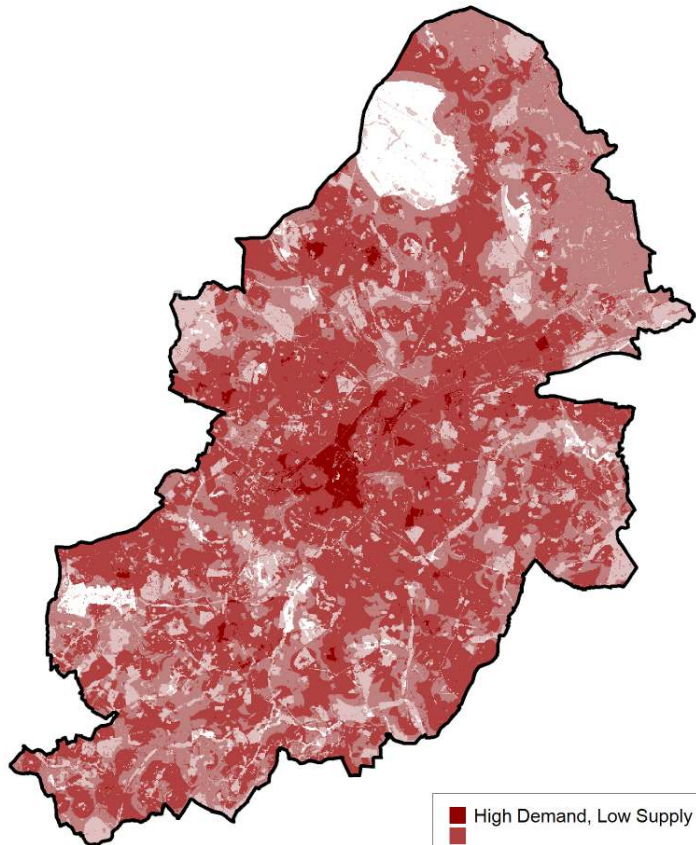
Reproduced from the Ordnance Survey Mapping with the permission of Her Majesty's Stationery Office. Crown Copyright. Unauthorised reproduction of this map is prohibited. Use subject to the terms and conditions of the copyright statement and disclaimer.

LORD  
STAFFORD  
AWARDS

Principle	Output & Policy
An Adapted City	<b>Retain City’ s top ranking for adaptation</b>
	<ul style="list-style-type: none"> <li>•Ensure all future growth is ‘adapted’ .</li> <li>•Trees for cooling &amp; thermal insulation</li> <li>•Green roofs &amp; walls and Street Canyons Research</li> </ul>
The City’ s Blue Network	<b>Adopt Water Sensitive Urban Design</b>
	<ul style="list-style-type: none"> <li>•Enhance and the wider Blue network, walking &amp; cycling</li> <li>•Integrate SuDS, flood and water management solutions</li> <li>•Blue corridor/ network policy with Canals Rivers Trust</li> </ul>
A Healthy City	<b>Adopt Natural Health Improvement Zones (NHIZ)</b>
	<ul style="list-style-type: none"> <li>•Integrate the delivery of health and green living spaces</li> <li>•Extend ‘Be Active’ offer to neighbourhoods</li> <li>•Public Health as key partners in planning</li> </ul>
The City’ s Productive Landscapes	<b>Embrace urban forestry and urban food growing</b>
	<ul style="list-style-type: none"> <li>•Promote allotments</li> <li>•Facilitate community food growing, orchards, and woodlands</li> <li>•Promote the multiple benefits of urban forestry</li> </ul>
The City’ s Greenways	<b>Change Gear- to a walking and cycling City</b>
	<ul style="list-style-type: none"> <li>•Create walkable / cyclable neighbourhoods</li> <li>•Citywide signed routes linked to public transport</li> <li>•Link healthcare activities and prevention programmes</li> </ul>
The City’ s Ecosystem	<b>Birmingham as a Biophilic City</b>
	<ul style="list-style-type: none"> <li>•City to adopt an ecosystem services approach</li> <li>•Partners to lead on District NIA continuation plans</li> <li>•Birmingham to join global Biophilic Cities Network</li> </ul>
The City’ s Green Living Spaces	<b>Birmingham as international City of Green Living Spaces</b>
	<ul style="list-style-type: none"> <li>•Adopt the 7 principles across the planning framework</li> <li>• Green infrastructure and adaptation delivery group</li> <li>•Work with Business partners on future green economy</li> </ul>

# Commissioning green space for health

The Multi-layered Challenge map for Birmingham



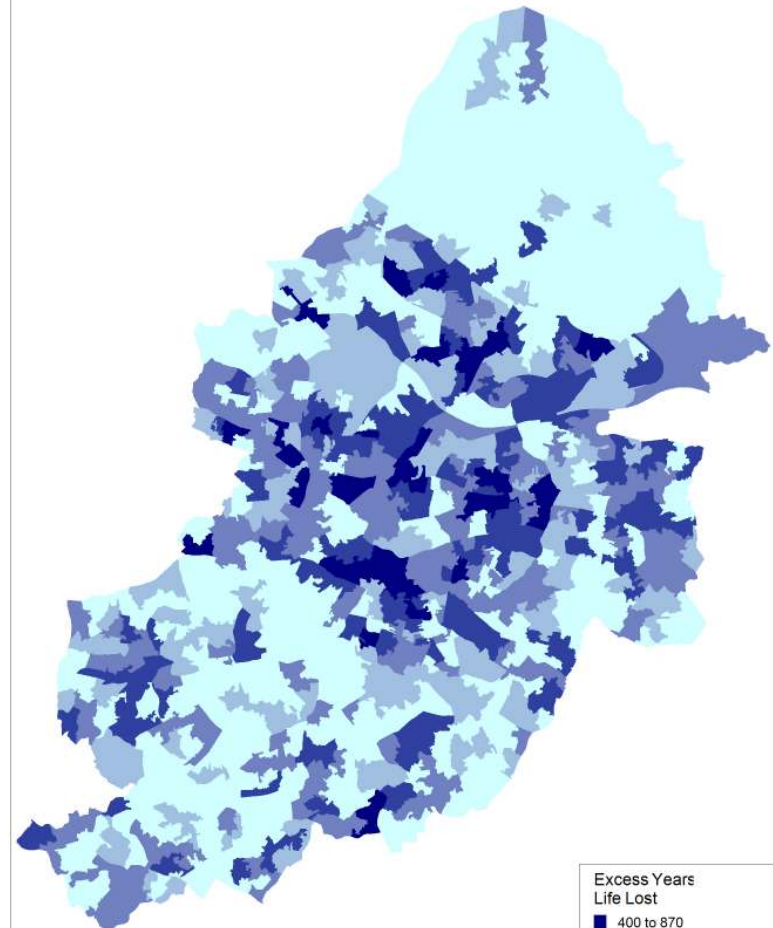
■ High Demand, Low Supply  
■ Low Demand, High Supply

March 2013



© Crown Copyright and database right 2013 Licence No. 100021326  
You are not permitted to copy, sub-licence, distribute or sell any of this data to third parties in any form.

Excess Years of Life Lost



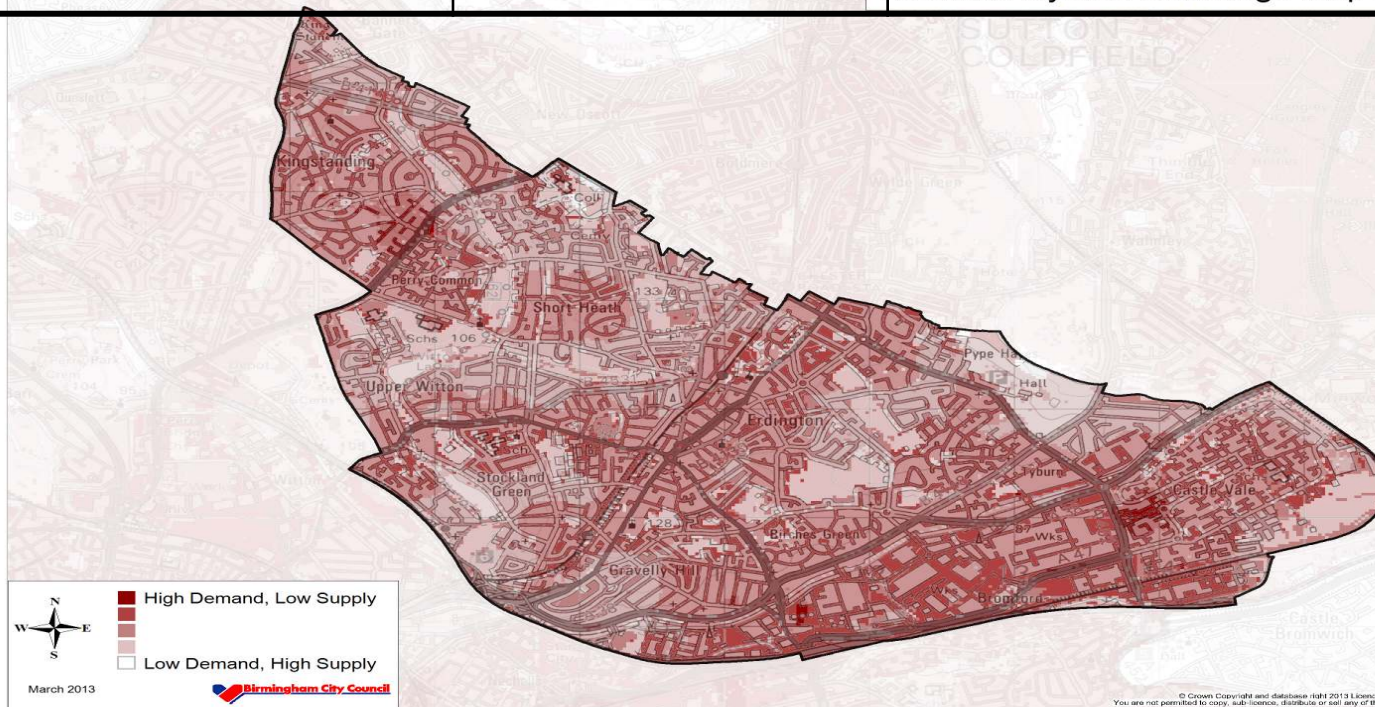
Excess Years  
Life Lost

■ 400 to 870  
■ 200 to 400  
■ 100 to 200  
■ 0 to 100  
■ -400 to 0



# Commissioning green space for health

Birmingham's Green Living Spaces Plan 2013	Your Green and Healthy City (SPD) 2013	Birmingham's Health & Well Being Strategy 2013	District Plans
Embeds <b>7 Key Principles</b>	Sustainable Development Policy	Social determinants of health & climate change	Work with the multiple challenge maps
		The Multi-layered Challenge map for	Erdington



## COMMUNITIES

Will have access to District Plans;

Each plan could inform community funding applications and priorities;

Direct link to Nature Improvement Area schemes;

# Commissioning green space for health

**BiophilicCities** - Cities that achieve a deep affinity with nature

